

lighting elements

---

*a musical comparison*



light draws a parallel relationship to music and sound.

music fills an auditorium with rhythm and sound.  
light fills an architectural space with brightness and form.

music and sound is a human experience.  
light helps humans be productive, aware, and responsive.

absence of sound is silence, absence of light is dark.  
both polar opposites, both important to understanding.

like composing, lighting design is an expression of space and  
time through a medium controlled by the designer.

my name is reinhardt swart.  
**let's shed some light on this.**

# *inspiration*

everyday is filled with musical and creative inspiration.

in order to listen, first hear.  
in order to see, first look.

photography  
dance  
drawing  
**creating**





cape town, south africa



detroit, mi



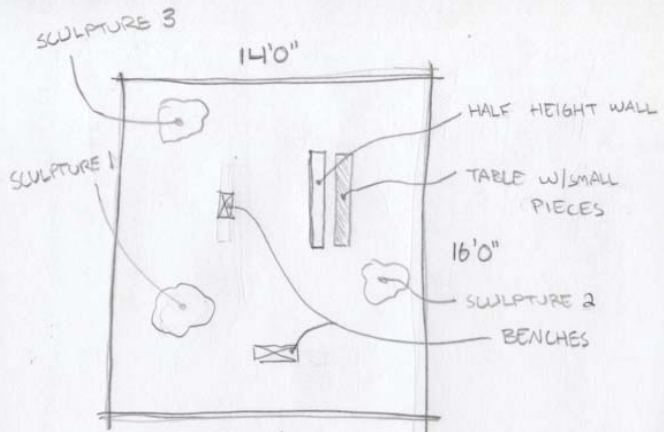
detroit, mi



state college, pa

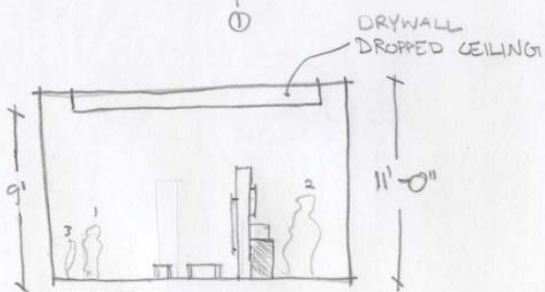


nittany lights | conceptually painting with trees and color



PLAN

① ↑



① SECTION

## MODERN ART MUSEUM

LIGHTING DESIGN | SPACIOUSNESS  
CLOSURE

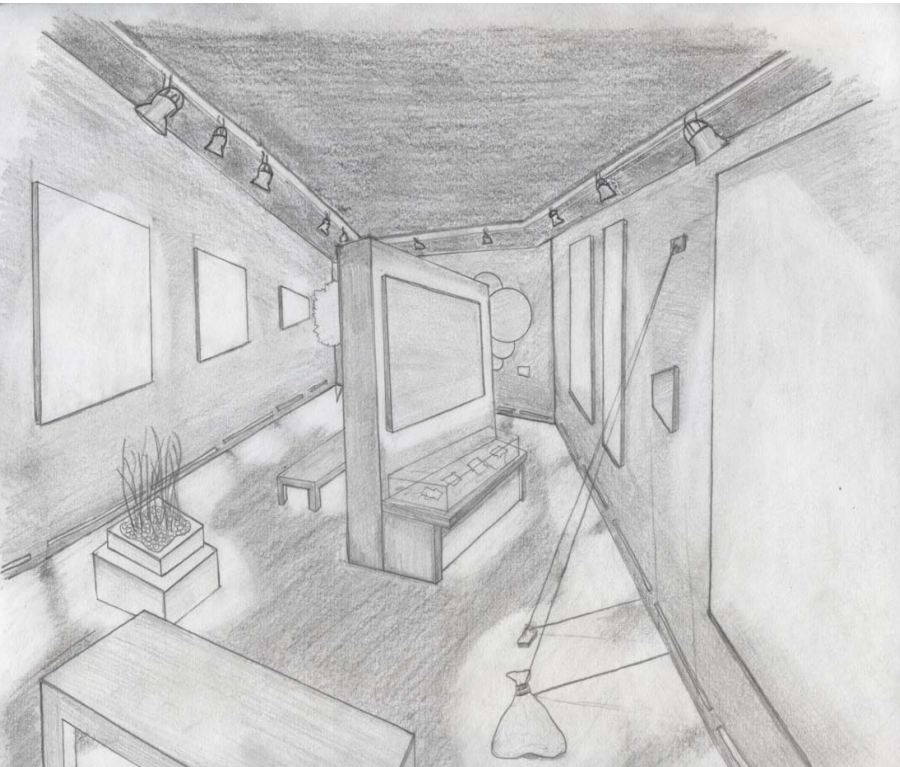
- ▣ WHITE WALLS
- ▣ LIGHT WOODEN FLOOR
- ▣ WHITE CEILING (DROP DOWN 2')
- ▣ HOUSE MODERN ART
  - PERMANENT
  - TEMPORARY
- ▣ WALL PIECES
- ▣ FLOOR PLACED PIECES

## fundamentals

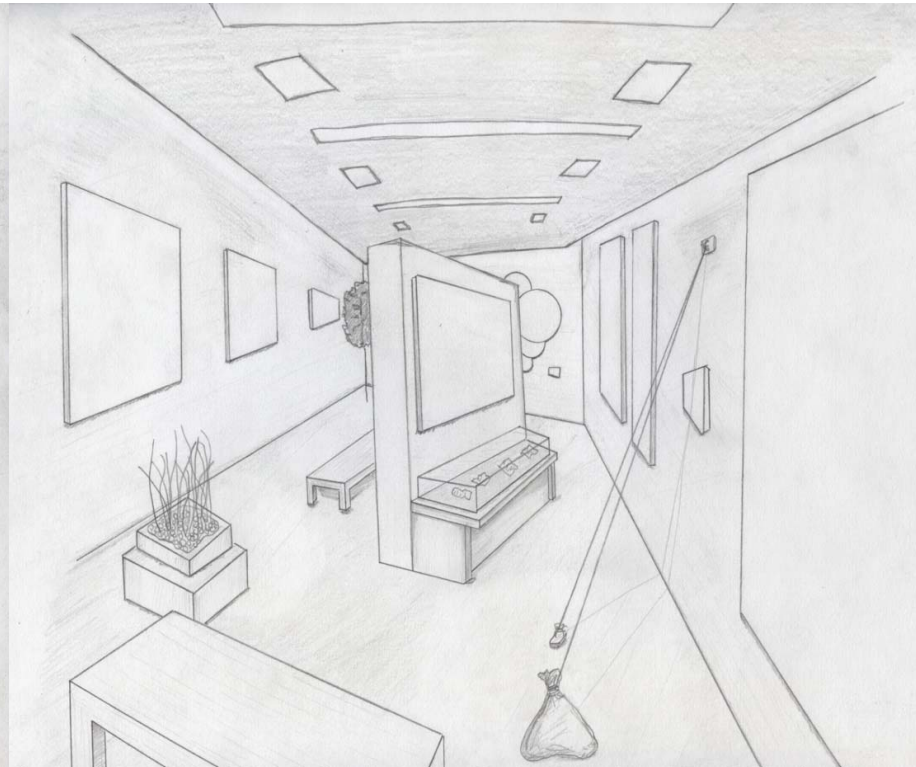
to succeed, first learn and practice the musical fundamentals.

different lighting can influence a viewer's psychological response.

**flynn modes**  
private versus public  
modern museum

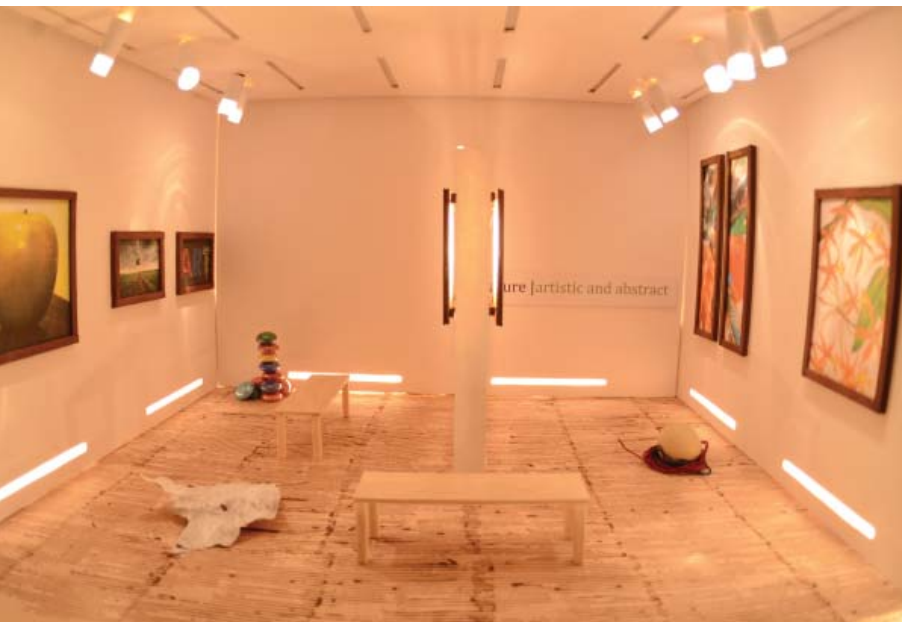


private impression



public impression





private impression



public impression

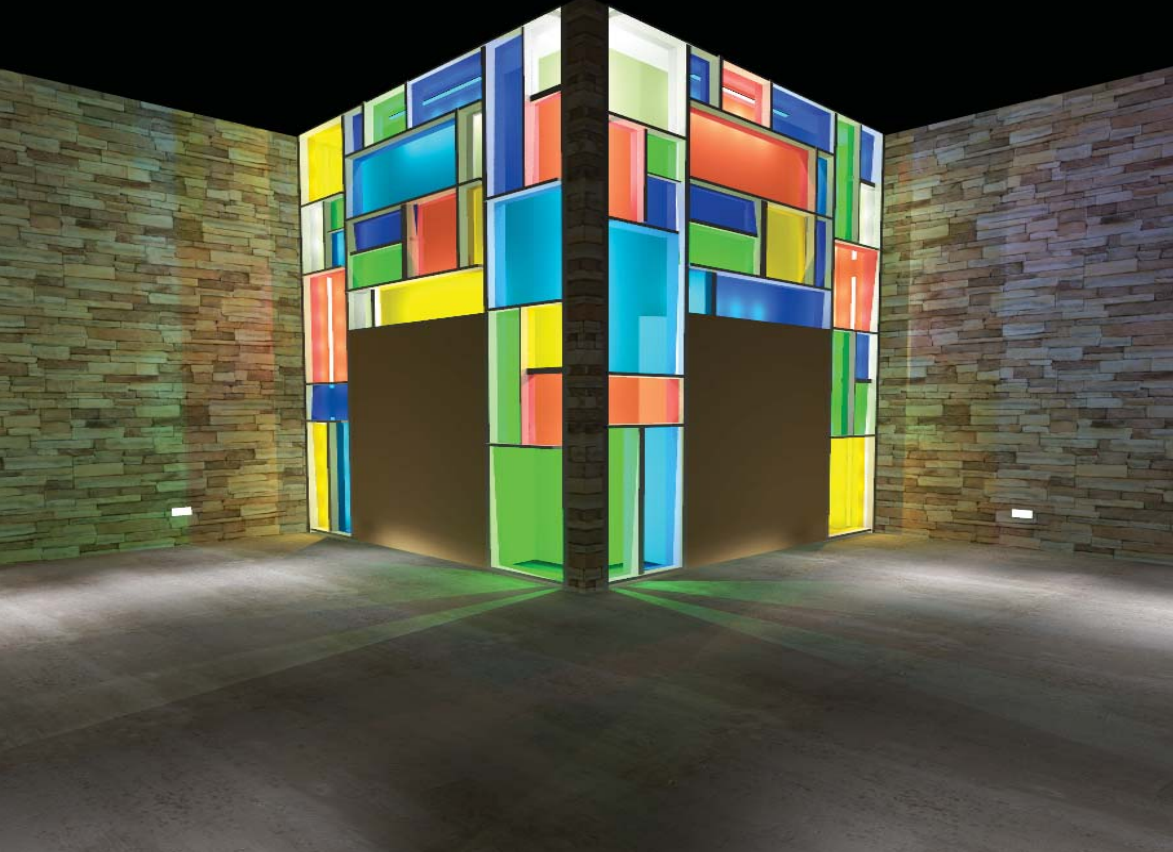
# fundamentals

lighting solution conceptually  
represents the life cycle of a frog.

egg  
tadpole  
metamorph  
frog



**fast frog lighting design**  
ae 461



entrance | resembles frog, creating visual interest (AGI32)



lobby | conception of ideas and meeting client (AGI32)

# *perform*

showcasing musical  
composition and progress.

a breeze at the beach, the smell  
of the ocean, and the sound of  
flapping sails: these sensations  
drive the lighting design.

gusts of light manipulate objects  
and connect spaces.

art is defined, through light, as  
wind in space and time.

**howard brandston**  
student lighting  
design competition





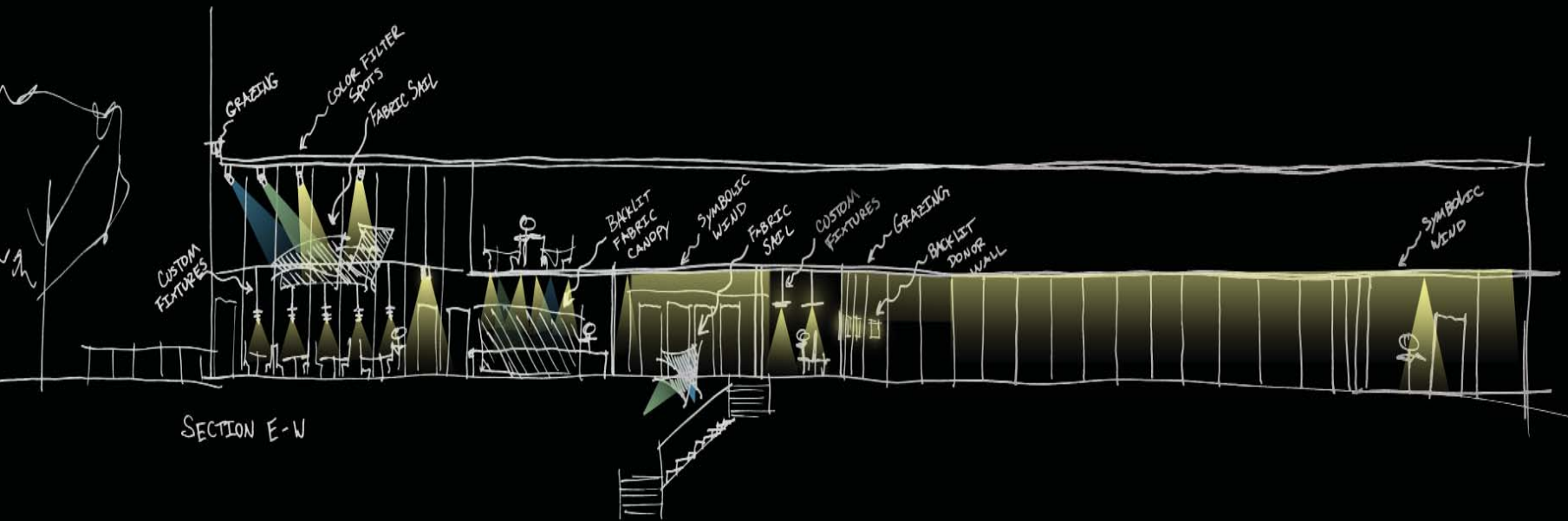
WIND CURRENTS

CURTAIN  
RANDOM + RHYTHMIC

WIND IS A CREATIVE FORCE  
BY WHICH WE CREATE  
WEATHER PATTERNS  
TO ITS ENVIRONMENT.

SPOTLIGHTS fabric

WIND IS A CREATIVE FABULISTIC  
MOVEMENT ACROSS IDEAS LIKE  
MOVEMENT ACROSS LAND.



SECTION E-W



3DS Max Design Studio







## *practice*

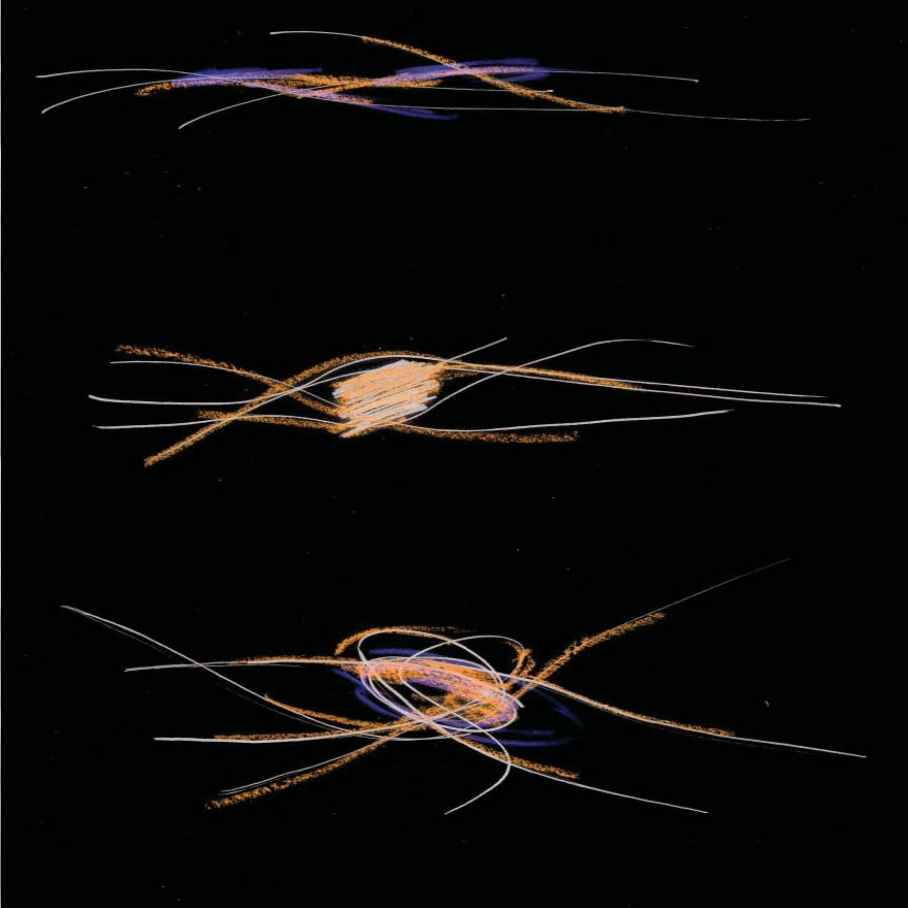
continue to practice playing,  
always learning and improving.

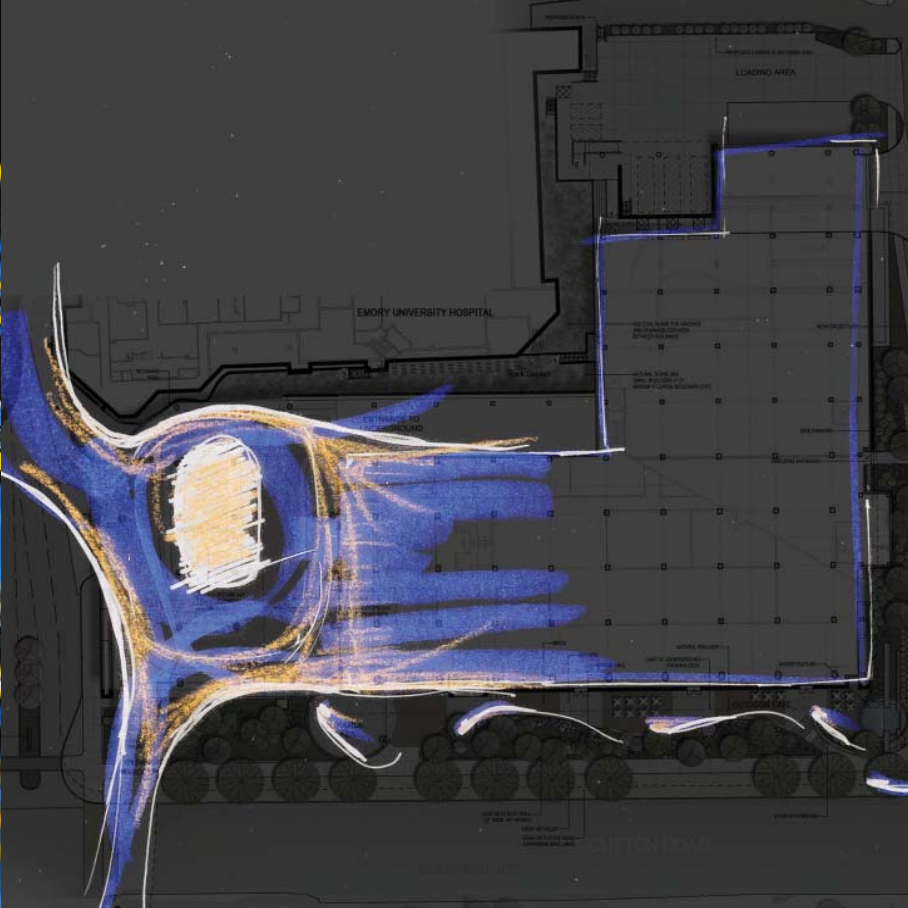
lighting reinforces flow and move-  
ment. flashing the bracing provides  
focal glow and rhythm.

clean indirect lines of light are  
comfortable for patients and allow  
the bridge to glow.

drawing people in,  
orienting visitors to the space, and  
encouraging exploration.

**emory hospital**  
drop-off and bridges









3DS Max Design Studio



reinhardt **swart**  
rxs5160@gmail.com  
724.504.2727

